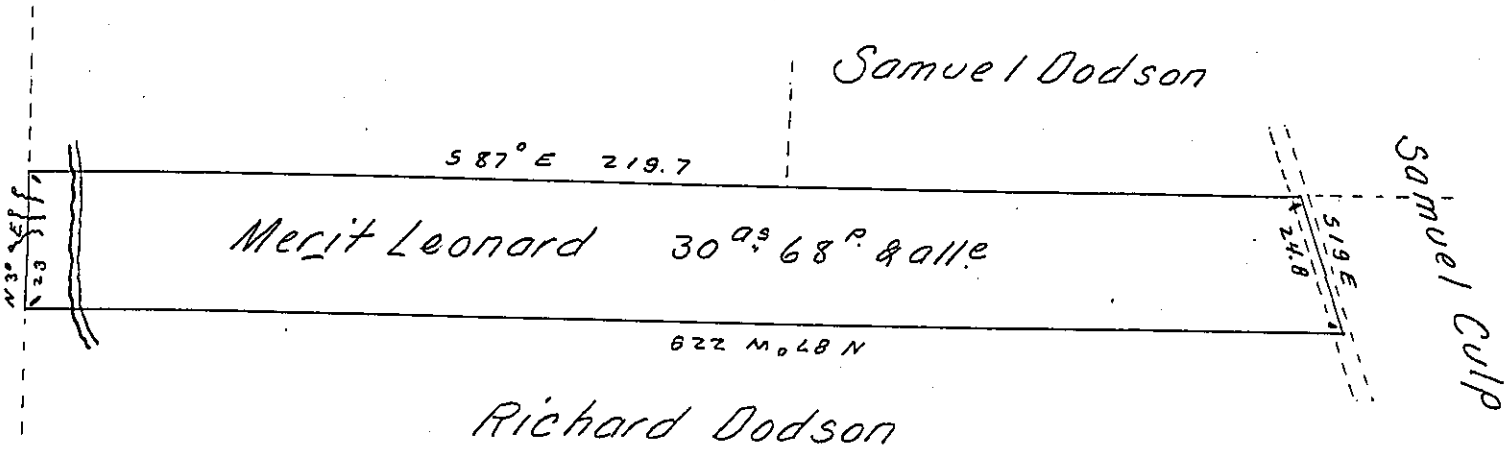


Edward Lewis



Draft of a tract or lot of unimproved land situate in the township of Union County of Luzerne, containing thirty acres & sixty eight perches & allowance of 6 per cent. for roads. Bounded on the North by lands of Samuel Dodson. East by lands of Samuel Culp. South by lands of Richard Dodson & on the West by lands of Edward Lewis. Surveyed the above described tract of land the 6th day of October A. D. 1862 to Meritt Leonard in pursuance of his warrant dated the 12th day of October 1859.

by John Sturdevant

To Hon. Henry Souther }
Surveyor Gen' }

County Surveyor for
Luzerne-

IN TESTIMONY that the above is a copy of the original remaining on file in the Department of Internal Affairs of Pennsylvania, made conformably to an Act of Assembly approved the 16th day of February, 1833, I have hereunto set my Hand and caused the Seal of said Department to be affixed at Harrisburg, this twelfth day of September 1905.

George R. Brown
Secretary of Internal Affairs.